

ROSELLE ACTIVE SENIORS

KRUCKERS PICNIC GROVE

WED., JULY 25TH \$ 68.00

PICK-UP EAST 2ND AVE.

PARKING LOT, ROSELLE

TIME: 8:30 AM

Summer Picnic

Arrival: 10:30 A.M.

Buttermilk Biscuit, Scone & Coffee

11:30 A.M. To 1:30 P.M.

Franks, Sauerkraut

Grilled Hamburgers/Cheeseburgers

Sausage, Peppers & Onions

French Fried Potatoes

Tossed Garden Salad

Manhattan Style Clam Chowder

1:00 P.M. Watermelon, Ice Pops

Music &
Dancing
1:00-4:00



Dinner-4:00

Served in the Edelweiss Dining Room

Rolls & Butter

Oven Roast Chicken Breast

****AND****

Sliced Roast Beef

Mashed Potatoes

Corn on the Cob

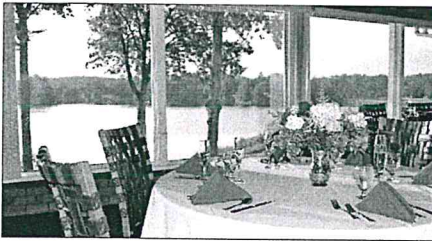
Mixed Vegetables

Ice Cream

Soft Drinks, Coffee, Beer, *Wine* until 5:0



TURN PAGE OVER --->



OUR PURPOSE AND INTENT

in the founding of Holiday Lake is the establishment and the perpetuation of a Club Plan family recreational community to serve as a "second home" week-end and vacation retreat in which each individual member of a qualified family can find, year after year, happiness and contentment in the continued use of Holiday Lake's many varied facilities and activities. We sincerely hope that this brochure with all its color photographs taken on the premises will help you picture this truly beautiful country club setting in the foothills of Sussex County, N. J.

ROSELLE ACTIVE SRS. ALOHA HAWAIIAN DANCERS AT HIGH POINT COUNTRY CLUB

MONTAGUE, NJ

TUES. AUGUST 21, 2018

TIME: 9:30 AM

MEET AT:

E. 2ND AVE. PARKING LOT

FULL BREAKFAST

&

FULL COURSE DINNER

CONTACT:

FRANCINE PAJEWSKI

908-241-8789

**REFUNDS GIVEN ONLY IF
YOUR TICKET IS RESOLD!**